

Northern Electric

A Touchstone Energy® Cooperative 

January 2019 Vol. 19 No. 9

Cooperative Connections



Legislative Voices

Page 8

Outlet for Savings

Page 12

Looking Back At 2018 And Forward To 2019

Grateful To Be Involved In The Communities We Serve



Ben Dunsmoor

bdunsmoor@northernelectric.coop

Northern Electric Cooperative is grateful to be involved in the communities we serve and we look forward to serving our members and our communities in many more ways in the year to come.

As 2018 wraps up and the New Year begins it is a good time to sit back and reflect on the past year and make goals for the year that lies ahead. As I look back at the ways your cooperative has given back to the community over the past year it makes me grateful to be part of the co-op and it should make you proud to be a member of an organization that has a deep commitment to community.

Every year Northern Electric Cooperative makes a tremendous commitment to youth in our community. We started the year by awarding a \$1,000 scholarship to Matthew Sperry and a \$500 scholarship to Sadie Vander Wal to assist these two fantastic local students with their future studies at South Dakota State University. The co-op also recognized two students in 2018 as the Touchstone Energy Scholar of the Week. We plan to distribute more scholarships and recognize more of our outstanding local students in 2019. You can find information about the 2019 scholarship program on page 14 of this magazine and you can download an application at www.northernelectric.coop/scholarships

In 2018, Northern Electric partnered with power provider Basin Electric Power Cooperative to launch a new youth program for high school students. Ten local students signed up for the new Empower Youth program this past summer and learned about cooperatives, leadership, and the great careers that are available at local co-ops in the region. Details are still being worked out for the future of the program but we were excited to take part in the pilot project in 2018.

Your cooperative also reached out to area youth in several other ways in 2018 by sponsoring Sarah Aman of Warner High School for the annual Rural Electric Youth Tour trip to Washington D.C., taking the Co-ops in the Classroom program to more than a dozen area schools, and participating in local youth farm safety camps and presentations.

Northern Electric Cooperative continued to show commitment to community in July when we invited Spink County volunteer firefighters and first responders to our Redfield office for a free meal and important electrical-safety training. It was our opportunity to say thank you to our local first responders and train them on the proper steps to take when they encounter electrical hazards at the scene of an emergency. The co-op hosted a similar event for Brown County first responders in 2017 and we hope to continue the training into the future so first responders can be equipped with critical knowledge about properly handling an electrical emergency.

Your co-op also participated in many other great community events during the past year including the Brown County Fair, the annual Redfield Homecoming Parade and Chili Cook-off, and National Night Out events in both Aberdeen and Redfield. Northern Electric Cooperative is grateful to be involved in the communities we serve and we look forward to serving our members and our communities in many more ways in the year to come. We wish everyone a healthy, safe, and prosperous New Year.



(USPS 396-040)

Board President: Donna Sharp

Board of Directors

- Randy Kienow – Vice President
- Nolan Wipf – Secretary
- Wayne Holt – Treasurer
- Fran Esser
- Victor Fischbach
- Ron Kaaz
- Josh Larson
- Mark Sumption

CEO/General Manager: Char Hager – info@northernelectric.coop

Chief Financial Officer: Cathi Podoll

Operations Manager: Mike Kelly

Manager of Member Services: Russel Ulmer

Manager of Information Technology: Derek Gorecki

Communications Director: Ben Dunsmoor - bdunsmoor@northernelectric.coop

Executive Secretary: Kay Albrecht

NORTHERN ELECTRIC COOPERATIVE CONNECTIONS is the monthly publication for the members of Northern Electric Cooperative, PO Box 457, Bath, SD 57427. Families subscribe to Cooperative Connections as part of their electric cooperative membership. The purpose of Northern Electric Cooperative Connections is to provide reliable, helpful information to electric cooperative members on electric cooperative matters and better rural living.

Subscription information: Northern Electric Cooperative members devote 50 cents from their monthly electric payments for a subscription. Non-member subscriptions are available for \$12 annually. Periodicals postage paid at Bath, SD 57427.

Postmaster: Please send address changes to Northern Electric Cooperative Connections, PO Box 457, Bath, SD 57427; telephone (605) 225-0310; fax (605) 225-1684

This institution is an equal opportunity provider and employer.

www.northernelectric.coop

facebook.com/NorthernElectricCooperative



Northern Electric Cooperative's regular board meeting was held November 29 at the headquarters in Bath with all directors present. Nolan Wipf attended via teleconference. Rural Utilities Service General Field Rep. Tom Jones was a guest for the meeting. As the first order of business, the board approved the October 18, 2018, minutes and October expenditures. The board then reviewed and accepted monthly reports by management.

Directors viewed the East River Electric Power Cooperative video report. East River Director Mark Sumption reported on actions taken by the ER Board at the November 1, 2018 meeting. The next SDREA Board Meeting will be November 29-30, 2018, in Pierre. Directors Francis Esser, Donna Sharp, Ronald Kaaz, Mark Sumption, General Manager Char Hager and Communications Director Ben Dunsmoor reported on the Basin Electric Annual Meeting which they attended November 6-8, 2018, in Bismarck, ND. General Manager Char Hager, Manager of Member Services Russ Ulmer and Communications Director Ben Dunsmoor reported on the East River Livestock Development Summit which they attended November 15, 2018, in Brookings, SD.

Manager's Report

General Manager Char Hager's report to the board included the following items:

- Update and discussion on development projects and activities taking place in the community and our service area.
- Discussion on the Northeast Rural Utilities Legislative Issues Forum held November 27, 2018, in Aberdeen.
- Discussion on plans for Mid-West Electric Consumers Assoc. Annual Meeting, December 10-13, 2018, in Denver, CO.
- Informed the board of the WEB Water Annual Meeting, December 7, 2018, at the Dakota Event Center, in Aberdeen.

- Calendar review of upcoming meetings.

Board Report

The board considered and/or acted upon the following:

1. Approved Policy P-41E, Interconnection of Distributed Resources to be effective November 29, 2018.
2. Approved and signed the Construction Work Plan documents for 2019 - 2022.
3. Approved the date and time of the next regular board meeting for 8:30 A.M. on Thursday, December 20, 2018.
4. Approved payment of legal fees for Harvey Oliver in the amount of \$973.09.
5. Approved Work Order Inventories #18-10 for \$84,684.80 and #18-10MC for \$35,877.31 to be submitted to the Rural Utilities Service (RUS) for reimbursement from loan funds for electric plant construction already completed.
6. Authorized limited board attendance to the 2019 NRECA Annual Meeting, March 7-13, Orlando, FL. Appointed Director Randy Kienow delegate for CFC, NISC and NCSC, Director Victor Fischbach delegate for NRTC and Federated, and Director Josh Larson delegate for NRECA. General Manager Char Hager to be alternate for all. Director Josh Larson will be attending director education classes that are required to become a Credentialed Cooperative Director (CCD).
7. Authorized board attendance to the 2019 East River Energize Forum, February 6-7, in Sioux Falls.
8. Approved revisions to existing Electric Tariffs.
9. Approved the 2019 Capital Budget.

Contact your cooperative manager, staff member or director with questions.

Financial Report	October 2018	October 2017
kWh Sales	25,078,147 kWh	23,023,093 kWh
Electric Revenues	\$2,333,736	\$2,289,094
Total Cost of Service	\$2,251,482	\$2,367,562
Operating Margins	\$82,254	(-\$78,469)
Year To Date Margins	\$395,344	\$295,392

Residential Average Monthly Usage and Bill

	October 2018	October 2017
October 2018	2,136 kWh	\$215.22
October 2017	1,809 kWh	\$196.62

Wholesale power cost, taxes, interest, and depreciation accounted for 81.4% of NEC's total cost of service.

Generator Safety

Portable generators can provide a good, temporary source of power during electrical outages, but can become deadly if improperly installed or operated.

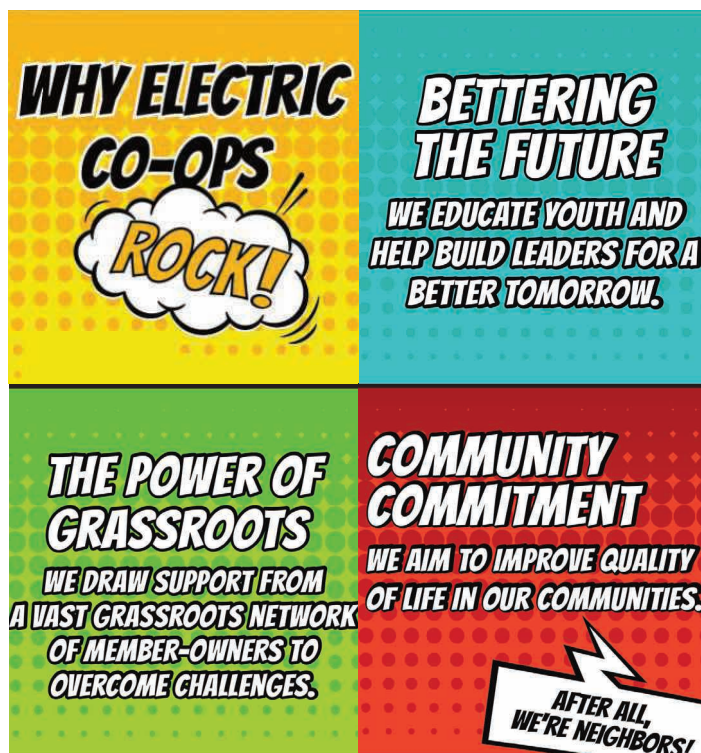
Generator Installation Safety Tips

- The Electrical Safety Foundation International (ESFI) strongly recommends that a licensed electrician install home generators to ensure they meet all local electrical codes.
- Do not connect generators directly to the household wiring without an appropriate transfer switch installed. Power from generators connected directly to household wiring can backfeed along power lines and electrocute anyone coming in contact with them, including utility lineworkers making repairs.
- Make sure your generator is properly grounded.
- Use a ground fault circuit interrupter (GFCI) to prevent electrocutions and electrical shock injuries. Portable GFCIs require no tools to install and are available at prices ranging from \$12 to \$30.

Using Your Generator Safely

- Make sure your home is equipped with a battery-operated or battery back-up carbon monoxide alarm.
- Never operate a generator inside your home or in other enclosed or partially-enclosed spaces. Generators can very quickly produce high levels of carbon monoxide (CO), which can be deadly.
- Opening doors and windows or operating fans to attempt to ventilate a generator will not prevent carbon monoxide build-up in the home. Even with a working CO alarm, you should never use a gasoline-powered generator inside your home or in a garage.
- Position the generator outside the home and away from doors, windows and vents that can allow CO to enter the home.
- Carbon monoxide is the “silent killer.” Get to fresh air right away if you feel dizzy or weak.
- Do not overload the generator.
- Plug appliances directly into the generator or use a heavy-duty, outdoor rated extension cord.
- Make sure extension cords used with generators are rated for the load and have three-pronged plugs. They should be inspected for damage, such as cuts and/or worn insulation before use.
- Turn off all appliances powered by the generator before shutting down the generator.
- Make sure fuel for the generator is stored safely, away from living areas, in properly labeled containers, and away from fuel-burning appliances. Before re-fueling, always turn the generator off and let it cool down.
- Keep children away from portable generators at all times.
- A generator is a temporary power source. Use a generator only when necessary to power essential equipment or appliances.

Source:esfi.org



KIDS CORNER SAFETY POSTER



“Never fly near power lines.”

Cooper VanderWal, 8 years old

Cooper is the son of Thomas and Katy VanderWal, Brookings, S.D. They are members of Sioux Valley Energy, Colman, S.D.

Kids, send your drawing with an electrical safety tip to your local electric cooperative (address found on Page 3). If your poster is published, you'll receive a prize. All entries must include your name, age, mailing address and the names of your parents. Colored drawings are encouraged.

Super Soups

Male Chauvinist Chili

6 slices bacon	1 tsp. dry hot mustard
10 oz. hot Italian sausage	1-1/2 tsp. chili pepper
10 oz. lean ground beef	1 tsp. celery seeds
1 large Spanish onion, cut in chunks	1/2 tsp. salt
1 bell pepper, cut in large pieces	1-1/2 tsp. fresh black pepper
2 cloves garlic, minced	6 cups Italian tomatoes, mashed with liquid
1/2 jalapeno pepper, diced (optional)	1 (15 oz.) can pinto beans, undrained
1 cup dark red wine	1 (15 oz.) can kidney beans, undrained
1/2 cup Worcestershire sauce	1 (15 oz.) can garbanzo beans, undrained

Brown bacon; drain, crumble and set aside. Brown sausage and ground beef separately; set aside. In a Dutch oven, cook onion, bell pepper, garlic and jalapeno pepper over low heat 2 to 3 minutes. Stir in wine and Worcestershire sauce; simmer uncovered for 10 minutes. Add mustard, chili pepper, celery seeds, salt and pepper; simmer 10 minutes. Add tomatoes and meats to onion mixture; heat to boiling. Reduce heat, cover and simmer 30 minutes, stirring occasionally. Stir in beans; heat to boiling; Reduce heat, cover and simmer 1 hour, stirring occasionally.

Ruth Schilberg, Viborg

Bacon Potato Chowder

8 slices bacon, cut-up	Salt and pepper to taste
1 cup chopped onion	1/2 cup sour cream
1 cup chopped celery	1-1/2 cups milk
2 medium potatoes, peeled and diced	1 (10 oz.) can cream of mushroom soup
1 cup chicken broth	

In a saucepan, cook bacon, onion and celery until bacon is lightly browned and vegetables are tender. Pour off drippings. Add diced potatoes, broth, salt and pepper. Cover; simmer 12 to 15 minutes until potatoes are done. Stir in soup, sour cream and milk; heat through. Serves 6.

Mary Jessen, Holabird

Leftover Turkey-Sage Noodle Soup

2 tsp. oil	1-1/2 tsp. sage, rubbed
1 cup chopped onion	1/2 tsp. thyme leaves
1 (32 oz.) container Kitchen Basics® Original Chicken or Turkey Stock	2 bay leaves
2 cups frozen peas and carrots	1 cup medium egg noodles
	2 cups chopped roast turkey

Heat oil in large saucepan on medium heat. Add onion; cook and stir 5 minutes or until softened. Add stock, peas and carrots, sage, thyme and bay leaves; bring to boil. Stir in noodles; cover and cook 10 minutes or until noodles are almost tender. Add turkey; cook 5 to 10 minutes or until noodles are tender and turkey is heated through. Remove bay leaves before serving. Makes 5 1-cup servings.

Nutritional Information Per Serving: Calories 209, Total Fat 5g, Protein 24g, Cholesterol 69mg, Sodium 444mg, Carbohydrates 17g, Fiber 3g

Pictured, Cooperative Connections

Dill Pickle Soup

5-1/2 cups chicken broth	1/2 cup flour
2 lbs. potatoes, peeled and diced	1 cup sour cream or Greek yogurt
2 cups chopped carrots	1/4 cup water
1/2 cup unsalted butter	2 cups pickle juice
1 cup diced dill pickles	Salt to taste
1/2 cup cooked, diced chicken	1/2 tsp. pepper

Bring chicken broth, potatoes, carrots and butter to a boil. Continue until potatoes and carrots are tender. Add pickles and diced chicken; continue to simmer. In a small bowl, whisk together flour, sour cream and water. Quickly stir into soup to thicken. Add pickle juice, salt and pepper. Continue cooking an additional 5 minutes.

Catherine Harts, Mission Hill, SD

Please send your favorite brunch, seafood, appetizer/ beverage recipes to your local electric cooperative (address found on Page 3). Each recipe printed will be entered into a drawing for a prize in June 2019. All entries must include your name, mailing address, telephone number and cooperative name.



The new AutoMaxx car dealership is located just east of Aberdeen on U.S. Highway 12.



REED FUND TURNS 'A DREAM' INTO REALITY

AutoMaxx of Aberdeen Opens For Business

Ben Dunsmoor

bdunsmoor@northernelectric.coop

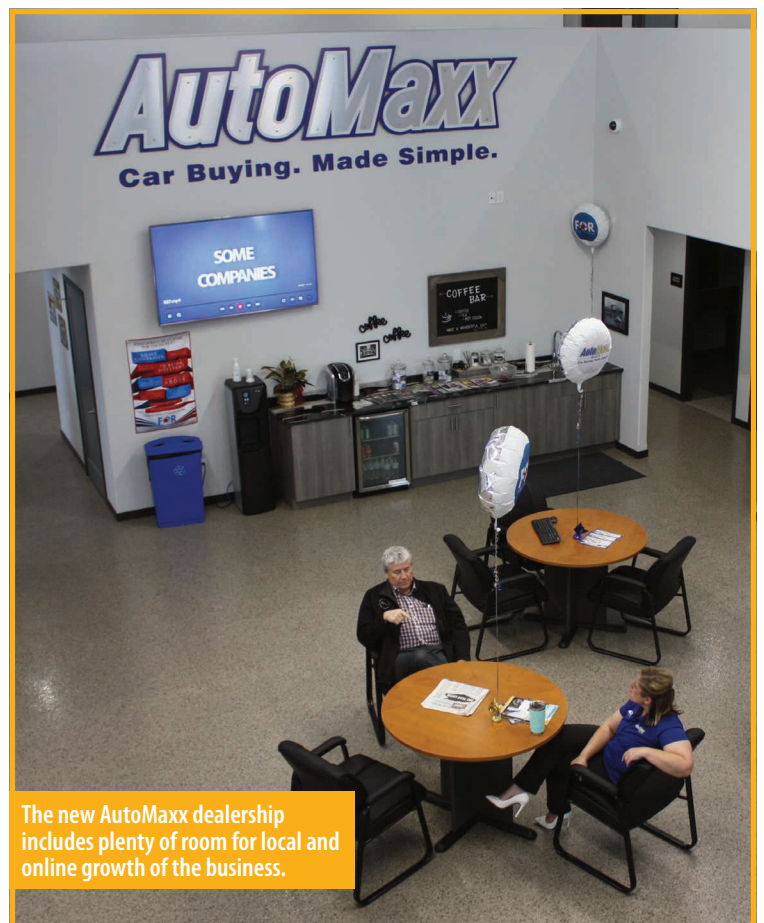
With room for more than 250 vehicles, the large car lot at AutoMaxx just east of Aberdeen is something co-owner Kelly Krausz has been dreaming about.

“It was a dream,” Krausz said. “I thought I should do it now or never do it.”

Krausz, who previously worked as a sales manager at another dealership in Aberdeen, opened the new AutoMaxx car dealership this fall with his business partner Josh Kraft.

AutoMaxx specializes in newer-used cars and wants to simplify the car-buying experience for customers.

“We believe everyone should drive a nicer, newer, car,” Krausz said. “We truly put the customer first. We want them to be happy and if we do that the rest will take care of itself.”



The new AutoMaxx dealership includes plenty of room for local and online growth of the business.

The more than 16,000 square-foot AutoMaxx building - and the 250-vehicle car lot which surrounds it - was built with the help of financing from the Rural Electric Economic Development (REED) Fund. Northern Electric Cooperative utilizes the REED Fund to partner with local banks, other loan funds, and state and federal agencies to finance community and economic development projects.

“In today’s economy, employment and economic development continue to be challenging. Providing financial assistance through the REED Fund is very gratifying for us because we know we are making a difference in our small communities and rural areas,” Northern Electric Cooperative CEO/General Manager Char Hager said.

The REED Fund provides gap financing to new and expanding businesses that create jobs. Ninety-eight percent of REED Fund-financed projects have local owners. Northern Electric has used the REED Fund to provide financing for other area projects including the new Boys and Girls Club of Aberdeen Area building, a new fueling station along U.S. Highway 281 in Frederick, and the new Horizon Aberdeen Community Health Center project.

The co-owners of AutoMaxx believe the REED Fund has allowed them to construct a project that will facilitate growth for the

new business.

“I feel like we are better positioned for the future,” AutoMaxx co-owner Josh Kraft said. “It (the REED Fund) put us in a good spot for the future.”

Kraft says AutoMaxx is positioned for growth because the new facility not only includes plenty of office space for the 12 employees who currently work at the car dealer, but it also has several vacant offices and meeting rooms so AutoMaxx can grow its business both locally and online.

AutoMaxx, which is located on U.S. Highway 12 just east of Aberdeen, also has a large shop for its service department, a storefront for an after-market accessories shop, a pet wash, and a touchless car wash. Krausz calls the car wash the ‘most-versatile’ wash in Aberdeen because of its capabilities to wash large vehicles and pick-up trucks.

“We really put ‘culture’ inside this building,” Krausz said. “We consider ourselves the dealer for the people.”

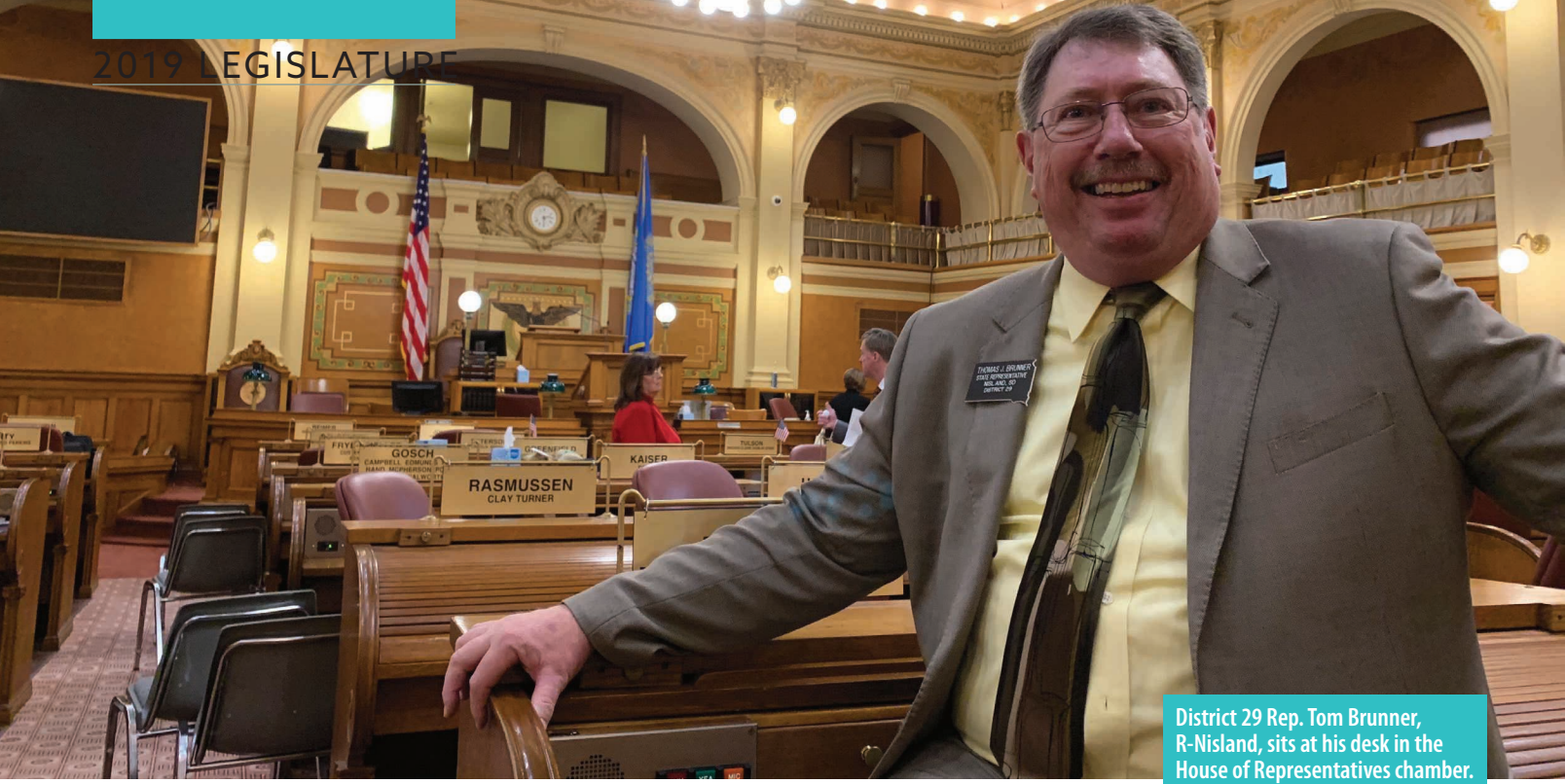
A car dealership which started as a dream and has now become a reality for both Krausz and the community.

To learn more about the REED Fund and how it can help local businesses or organizations visit www.reedfund.coop

“I feel like we are better positioned for the future. It (the REED Fund) put us in a good spot for the future.”



AutoMaxx co owner Kelly Krausz shows Northern Electric CEO/General Manager Char Hager the ‘most-versatile’ car wash in Aberdeen which is attached to the new AutoMaxx building.



District 29 Rep. Tom Brunner, R-Nisland, sits at his desk in the House of Representatives chamber.

UNDER THE DOME

Co-op Leaders Elected to State Legislature

Brenda Kleinjan

editor@sdrea.coop

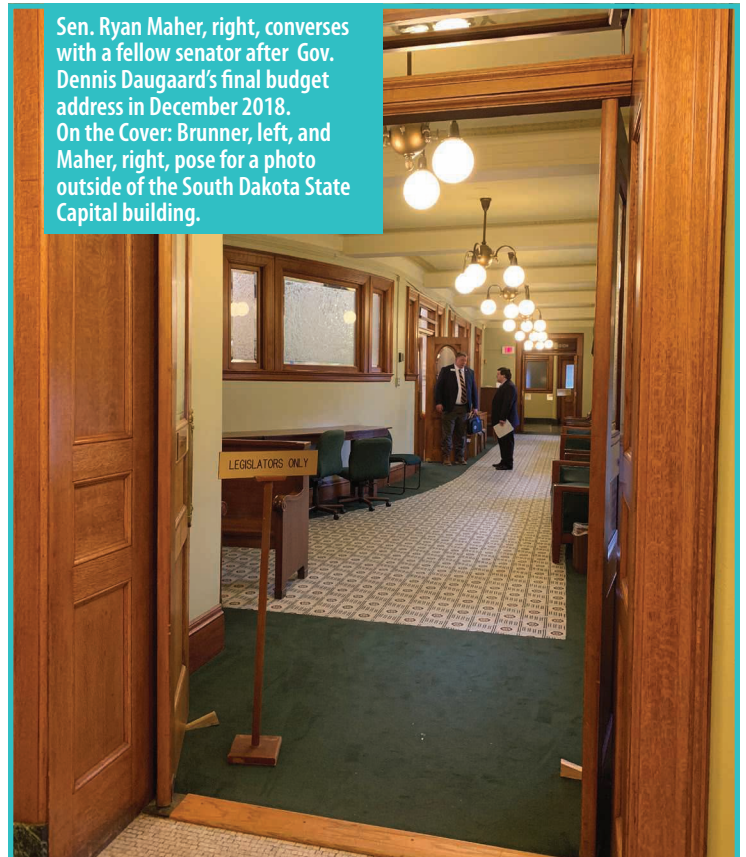
As legislators head back to Pierre Jan. 8 for the start of the 94th South Dakota Legislative Session, among the body will be a long-time electric cooperative director.

Rep. Tom Brunner, a farmer from Nisland, S.D., returns to the South Dakota House of Representatives after being re-elected to serve District 29, which encompasses portions of Butte, Meade and Pennington counties in western South Dakota. Brunner is entering his third term, having won elections in 2014 and 2016. The Republican had previously served in the House from 2005-2012, including a stint as a Majority Whip in 2007-08.

“I serve because I think it’s my way of giving back to the community. I represent a lot of people who can’t take the time or feel intimidated by speaking out in public. I hope I always bring an opinion that would make my constituents proud to have me represent them,” said Brunner.

Brunner’s service to community extends beyond the hallways of the South Dakota Capitol building. Since 1991, he has served on the Butte Electric Cooperative board of directors in Newell, S.D.

Sen. Ryan Maher, right, converses with a fellow senator after Gov. Dennis Daugaard’s final budget address in December 2018. On the Cover: Brunner, left, and Maher, right, pose for a photo outside of the South Dakota State Capital building.



Minnesota's 91st Legislative Session to Start Jan. 8

On Jan. 8, Minnesota's elected leaders head to St. Paul for the 91st Session of the Minnesota Legislature. Coverage of the session starts at 8 a.m. Tuesday on the Minnesota Channel, which is carried by Minnesota's six independent public television stations.

Legislative television programming is produced and created by the Minnesota House of Representatives and the Minnesota Senate.

The Minnesota Legislature has 67 senators and 134 representatives for a total of 201 members. The size of the Legislature has changed over time. Since statehood the lowest number of members was 63 and the highest was 202.



According to Minnesota Statute 3.011, the legislature meets at the seat of government on the first Tuesday after the first Monday in January of each odd-numbered year. It shall also meet when called by the governor to meet in special session. In the even numbered years, it convenes on a date set by joint agreement of both bodies. The state constitution limits the Legislature to meeting 120 legislative days during each biennium. In addition, the Legislature may not meet in regular session after the first Monday following the third Saturday in May of any year.

Contact Minnesota Legislators

For contact information on Minnesota House members, visit:

<https://www.house.leg.state.mn.us/members/hmem.asp>

For contact information on Minnesota Senators, visit:

<http://www.senate.leg.state.mn.us/members/index.php?ls=%20-%20header>

And, Brunner has the distinction of being the longest-serving member of the South Dakota Rural Electric Association board of directors, having represented Butte Electric on the SDREA board since 1994. Brunner was the ninth individual to serve as the SDREA board president in the association's 77 year history, serving from 2001 to 2006.

On the other side of the Capitol building, Sen. Ryan Maher of Isabel is returning to the Senate representing District 28 in northwestern South Dakota. District 28 is the state's largest district geographically, extending from the Missouri River to the Montana state line. It includes Harding, Perkins, Corson, Dewey and Ziebach counties and much of northern and western Butte County. Like Brunner, Maher was a familiar face in Pierre prior to his re-election in November. Maher first served in the South Dakota Senate from 2009 to 2014 before returning in 2017. He served as the Republican assistant majority leader in 2018.

The bar and grill owner and insurance agent from Isabel is also a director on his local electric cooperative board. Maher was elected in

2017 to the Timber Lake, S.D.-based Moreau-Grand Electric Cooperative board of directors.

Also on the House side is District 26A Rep. Shawn Bordeaux, D-Mission. Bordeaux, who is the Director of the Institute of Tribal Lands at Sinte Gleska University, serves on the board of directors for Cherry-Todd Electric Cooperative in Mission. This is Bordeaux's third term in the House where he represents Todd and Mellette counties in south central South Dakota.

The South Dakota Legislature is bicameral, consisting of a Senate, comprised of 35 members, and a House of Representatives with 70 members.

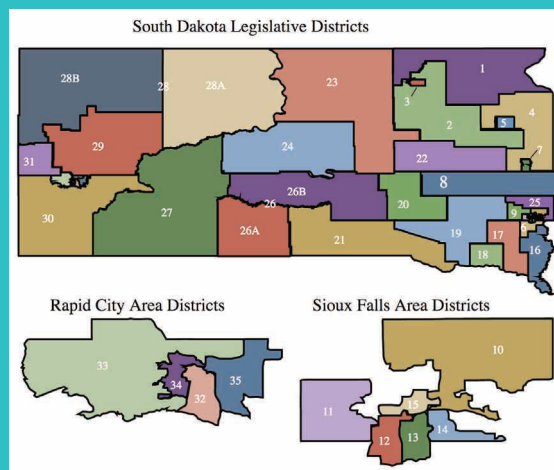
The main run of the 40-day legislative session goes through March 13. Lawmakers return to Pierre March 29 to consider gubernatorial vetoes.



Rep. Shawn Bordeaux
D-Mission

South Dakota's Legislature

Each Legislative District in South Dakota is represented in Pierre by two members in the South Dakota House of Representatives and one Senator. (Districts 26 and 28 are split into an A portion and a B portion, with a specific Representative for that area.) Need to contact your legislator while they're in Pierre? Go to <http://sdlegislature.gov/> From there, you can search your Senator or Representatives, see the committees which they are assigned and send them an email. Need to reach them by phone? You can call and leave a message with the senate at 605-773-3821 or with the House of Representatives at 605-773-3851. You can also send a fax to 605-773-6806.



Livestock Development Summit Identifies Economic Growth Opportunities

Nearly 300 Attend November 15 Event At SDSU

“This (livestock development) is a great way for young people to join their family operation and contribute.”

Governor Dennis Daugaard

Northern Electric Cooperative in collaboration with the region’s other Touchstone Energy® Cooperatives, hosted a Livestock Development Summit on November 15, 2018, at the South Dakota State University (SDSU) Performing Arts Center in Brookings. Nearly 300 producers, community leaders, and representatives from agriculture organizations attended the event.

The purpose of the summit was to address key issues related to livestock development, discuss the most effective and responsible ways to move forward and connect farmers with leaders and businesses in the industry. It also presented attendees with a better understanding of the challenges, opportunities and growth potential offered by livestock development across South Dakota and southwestern Minnesota.

“We want to open the door for South Dakota and Minnesota livestock



A panel of young producers talked about the role livestock plays in keeping future generations on the farm.

producers to seriously consider the opportunity to expand their operation,” Mike Jaspers, business development director for East River Electric Power Cooperative said. East River Electric is the wholesale power provider for the region’s Touchstone Energy Cooperatives.

“Often, a livestock producer will mull around the idea to expand for quite a while before taking action on it. We wanted the Livestock Development Summit to be a catalyst for taking the first steps toward that expansion,” Jaspers said.

South Dakota Governor Dennis Daugaard and SDSU President Barry Dunn served as featured speakers at the free event. They both highlighted the role livestock development plays in



South Dakota Governor Dennis Daugaard was one of the featured speakers at the Livestock Development Summit.



Images Courtesy: East River Electric Power Cooperative

Nearly 300 producers and community leaders attended the Livestock Development Summit hosted by local Touchstone Energy Cooperatives at SDSU.

keeping future generations in their local communities.

“If you’re from small town South Dakota it is very hard to attract Amazon or Google,” Daugaard said during his address to the attendees of the summit. “This (livestock development) is a great way for young people to join their family operation and contribute.”

An economic impact panel discussed the potential impact of livestock development on local communities, including ancillary businesses, other farmers, utilities, workforce, schools and infrastructure. The panel’s participants also provided economic data related to the production and processing of agricultural products to support their positions.

“If you want jobs in communities you have to be open to having livestock,” South Dakota State University Animal Science Professor Dr. Robert Thaler said during the panel discussion. “If you want young people to come back to rural communities you have to have livestock to do that.”

A next generation farmer and agribusiness panel included Millennial farmers who discussed various opportunities to come back to the farm and how young entrepreneurs face unique challenges as they try to meet capital and site requirements. Panel participants also shared their personal experiences and vision for the next generation of farming in South Dakota and southwestern Minnesota.

A panel on siting, zoning and permitting included local county commissioners, a representative from the South Dakota Department of Agriculture, and a member of the ‘Friends of the Big Sioux River’ organization. The panel focused on how local control is a fundamental tenet of agricultural production and processing. Navigating state and county regulations to get a site approved can be daunting for new livestock producers. The experts on the panel offered a realistic view of what it takes to get a new livestock operation permitted.

“If you want young people to come back to rural communities you have to have livestock to do that.”

Dr. Robert Thaler (SDSU)

Financial capital is a major sticking point for many livestock operations looking to expand, which is the reason the final panel discussion of the summit focused on how to access the right type of capital for a new livestock operation and ensure long-term viability and profitability. The panel included lenders from various banking institutions in the region who have worked

with livestock producers on expansions from a financial perspective.

Networking and roundtable opportunities followed the panel discussions. This portion of the event helped facilitate one-on-one and small group discussions with the panelists and other industry experts who were available to talk through specific scenarios that individual attendees may have had.

If you would be interested in discussing opportunities for a local summit in northeast South Dakota, please contact Northern Electric CEO/General Manager Char Hager or Communications Director Ben Dunsmoor at 605-225-0310.

An Outlet for Energy Savings

Smart Outlets Offer Savings

Kaley Lockwood

NRECA

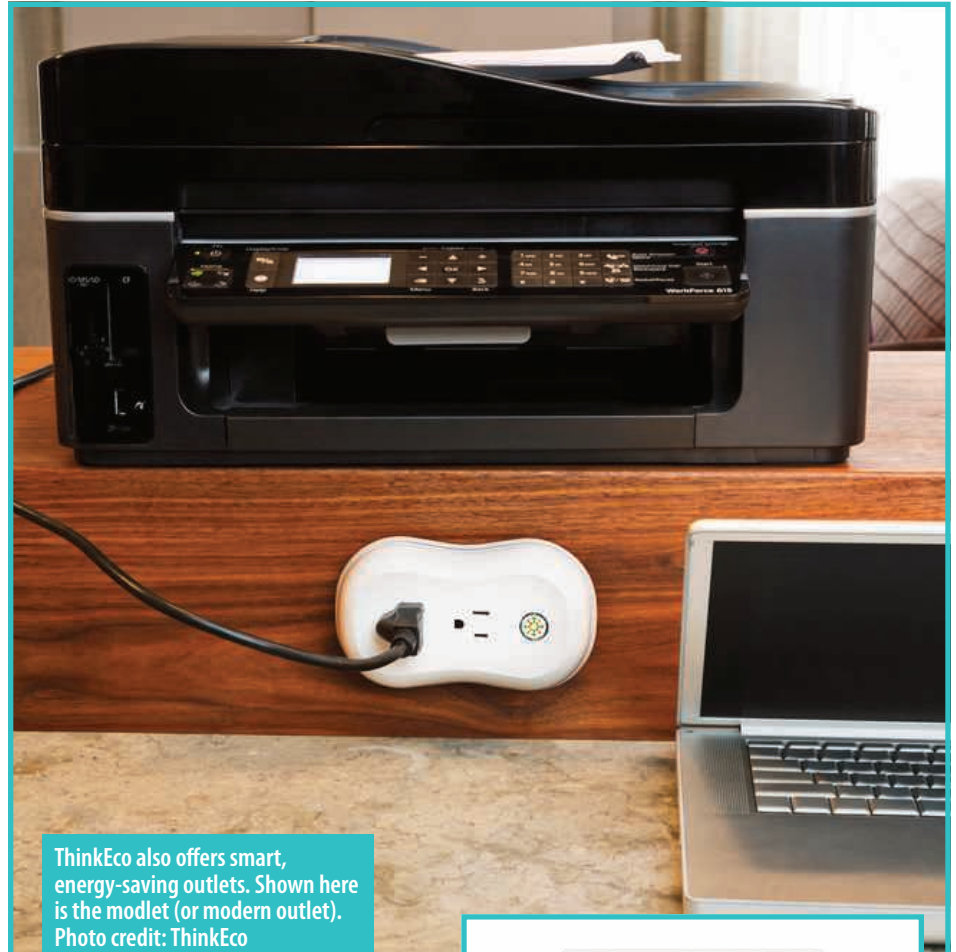
These devices afford the same surge protection as their predecessors, but also tie in the “smart” functionality of an internet-connected device.

Does the ebb and flow of your energy bill have you searching for an affordable way to reduce or better control your use? If you answered yes, then look no further because we’re taking a quick dive into a practical and affordable device that allows you to better manage your home’s energy use. We’re talking about energy-saving outlets!

These next-generation devices afford the same surge protection as their predecessors, but also tie in the “smart” functionality of an internet-connected device.

There are several different kinds of energy-saving outlets available, but there are two factors you should consider. First is size; there are many different sizes ranging from a single external outlet to a power strip with multiple sockets. The second thing you’ll want to consider is Wi-Fi connectivity; internet-connected outlets, commonly known as smart plugs, may enable you to fully realize the potential of these energy savings. This is because you’ll have greater remote control of the outlet through your smart phone, tablet or home assistant (like Google Home or Amazon’s Alexa).

You’ll also want to consider where you’ll be

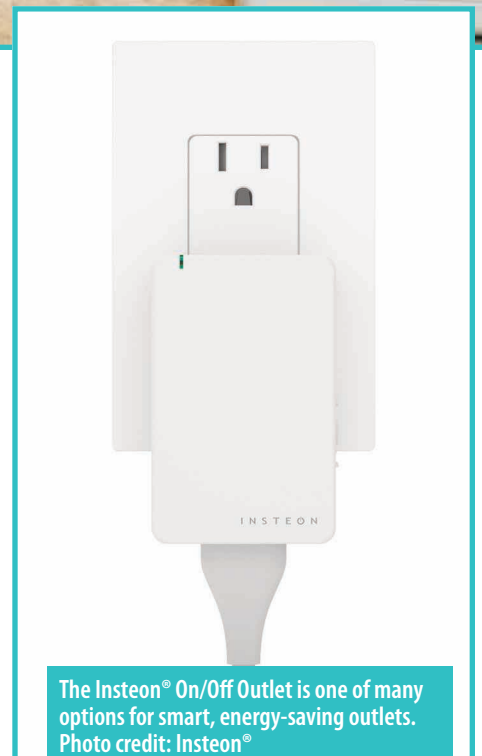


ThinkEco also offers smart, energy-saving outlets. Shown here is the modlet (or modern outlet). Photo credit: ThinkEco

using the energy-saving outlet and what you’ll be using it for. Answering these questions will make it easier to choose the device that works best for you.

With smart plugs or smart power strips, a few clicks and swipes on your smart phone will enable you to fully shut down the electrical currents to your high-powered devices to prevent them from consuming electricity even when switched off. Several devices found inside your home are commonly referred to as “parasitic loads,” “phantom loads” or “energy vampires.” In fact, most entertainment systems consist of several parasitic loads, such as televisions, DVD players and video gaming consoles. These outlets can potentially curb these loads, which can cost the average household an extra \$200 per year.

In addition to preventing unnecessary



The Insteon® On/Off Outlet is one of many options for smart, energy-saving outlets. Photo credit: Insteon®



ThinkEco's modlet (or modern outlet) can be controlled remotely and even adjust to your personal schedule. Photo credit: ThinkEco

Convenience is also a major factor to consider when thinking about your next efficiency upgrade.

energy consumption, these energy-saving outlets are affordable for most folks who are looking to trim their use. The average smart outlet costs around \$10 to \$20 on Amazon.com and has the potential to pay for itself within two years or less depending on how often you use it.

As previously noted, convenience is also a major factor to consider when thinking about your next efficiency upgrade. Smart plugs typically come with simple instructions to download an accompanying app on your smart phone and then connect the plug to your home's Wi-Fi. The convenience in being able to turn the device on and off using your phone cannot be understated. Advanced smart plugs and smart plug apps also have the ability to automate the use with your schedule and even your presence in the home.

You can also have large-load devices turn off at a set time each night and turn on

every morning when you're ready to use them. If you want to use your television, for example, at a time that's outside of the preset hours, you can easily switch the device on through the smart phone app. Through automation, you're able to power down these energy-intensive devices and prevent unnecessary energy use.

For folks who are looking to optimize their energy use and eliminate vampire loads, smart plugs may be your best option. For others who want more of a hands-off option to save additional dollars, energy-saving outlets and power strips without the Wi-Fi connection may be a better choice.

Either way, energy-saving outlets are just one of many energy efficient options out there and as technology continues to evolve, we'll likely see additional options emerge in the future.

Kaley Lockwood writes on consumer and cooperative affairs for the National Rural Electric Cooperative Association, the national trade association representing more than 900 local electric cooperatives. From growing suburbs to remote farming communities, electric co-ops serve as engines of economic development for 42 million Americans across 56 percent of the nation's landscape.



The Insteon® On/Off Outlet outlets can be controlled remotely, but consumers will need to purchase the Insteon Hub first, which costs about \$40. Photo credit: Insteon®



Students Can Apply Now For \$1,000 and \$500 Co-op Scholarships

2019 Scholarship Applications Being Accepted

Students of Northern Electric Cooperative members who are currently enrolled in a post-secondary school - or plan to enroll in the fall of 2019 - can now apply for two co-op-sponsored scholarships.

Bismarck-based Basin Electric Power Cooperative, which generates electricity for Northern Electric Cooperative, is awarding a \$1,000 scholarship to a student within the Northern Electric service territory. Northern Electric is also awarding a \$500 scholarship to a student of a co-op consumer. Students can apply for both scholarships by filling out one Basin Electric 2019 scholarship application which can be found on the Northern Electric website at www.northernelectric.coop/scholarships. Applications can also be picked up at a Northern Electric office.

In 2018, Matthew Sperry of Bath was awarded the \$1,000 Basin Electric scholarship and Sadie Vander Wal of Brentford was the recipient of the \$500 Northern

Electric scholarship. Both Sperry and Vander Wal enrolled in their first year of studies at South Dakota State University this fall.

The scholarship application includes information about the student's academic record, ACT/SAT test scores, work experience, an applicant appraisal from an advisor or supervisor, and a one-page essay on the topic: 'Describe how a cooperative can build a culture to best serve its members.' The entire application must be completed and turned into one of the Northern Electric Cooperative offices in Bath or Redfield by the February 15, 2019 deadline.

A committee of cooperative employees will critically evaluate the applications and award both the \$1,000 and \$500 scholarship from the pool of applicants. Scholarships will be directly paid to the institution where the recipient is enrolled in the fall of 2019.

How to Apply

- **Scholarship Eligibility**

Applicants must be U.S. citizens, under the age of 25, and natural or adopted children of Northern Electric Cooperative consumers/members. Any applicant must be a student who is enrolled, or planning to enroll, in a full-time graduate or undergraduate course of study at an accredited two-year or four-year college, university, or vocational/technical school.

- **How the Selection Process Works**

All applications are critically evaluated using a combination of several criteria including: SAT/ACT scores, grade-point average, work experience, participation in school and community activities, a statement by the student explaining his/her educational and career goals, financial need, and a written recommendation by a third party.

A committee of cooperative employees will evaluate the applications and submit the entry to Basin Electric for scholarship distribution and select the winning entry for the Northern Electric scholarship.

- **Application**

Applications are available from local high school guidance counselors, on the Northern Electric Cooperative website at www.northernelectric.coop/scholarships, or directly from the Northern Electric offices in Bath or Redfield.

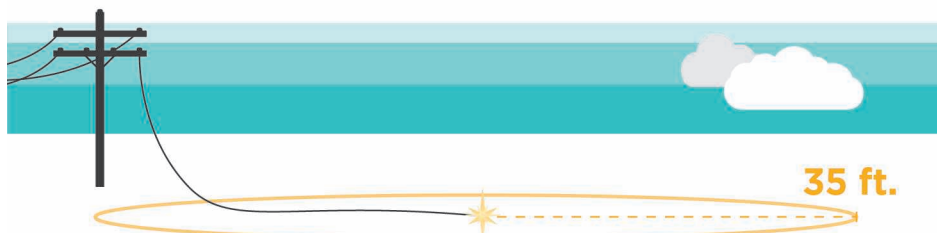
Completed applications MUST BE RETURNED BY FEBRUARY 15, 2019 to:

Northern Electric Cooperative
ATTN: Kay Albrecht
PO Box 457
Bath, SD 57427

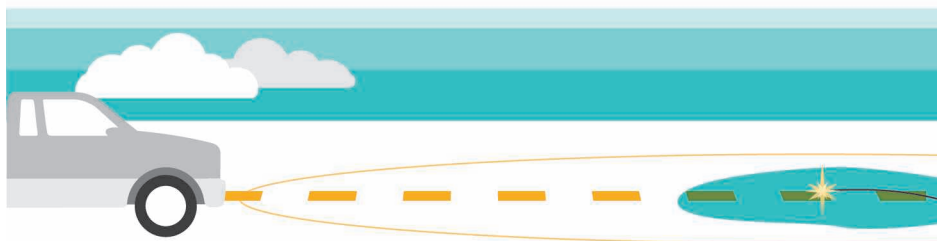
For more information contact Kay Albrecht at: **605-225-0310**

Downed and Dangerous

If you see a downed power line, always assume it is energized and dangerous. Avoid going near it or anything in contact with the power line.



Downed power lines can energize the ground up to **35 ft.** away - so keep your distance.



Never drive over a downed line or through water that is touching the line.



If you see a downed line, notify the local authorities immediately.



Never try to move a downed power line, even if you think the line is deenergized or if you're using a non-conductive item - this will not prevent injury or death!



AMERICA'S ELECTRIC
COOPERATIVES

Source: ESFI.org

RECIPES NEEDED FOR

THE COUNTRY COOKIN' *cookbook*

Your recipe could be featured in the 35th volume of East River Electric's Country Cookin' cookbook!

Help us create another great cookbook by submitting your favorite recipes as well as recipes for the cookbook's "Light Side" section.

Submit recipes via email to

kstone@eastriver.coop,
fax to 605-256-8057,
or contact your local cooperative for more information.

Submission deadline is
January 28, 2019.

October 20-January 6

Pheasant Hunting Season, Statewide, Pierre, SD, 605-223-7660

November 20-December 26

Christmas at the Capitol, Pierre, SD, 605-773-3178

December 15-March 31

South Dakota snowmobile trails season, Lead, SD, 605-584-3896

December 22-23

1880 Train Holiday Express, Hill City, SD, 605-574-2222

January 3-5

Dakota Farm Show, Thursday and Friday 9 a.m. to 5 p.m., Saturday 9 a.m. to 5 p.m., Dakota Dome, Vermillion, SD

January 11-12

Annual Red Dirt Festival, Deadwood, SD, 605-559-0386

January 15

40th Annual Ranchers Workshop, 9 a.m. to 2:30 p.m. CT, Community Events Center, White River, SD, 605-259-3252 ext. 3

January 17

Community Club Annual Banquet, Dinner catered by The Knotty Pine Supper Club, Entertainment by Comedian Scott Novotny, Elkton, SD Tickets 605-542-2681

January 18-19

Media One Funski, Sioux Falls, SD, 605-339-0000

January 18-20

Winterfest, Lead, SD, 605-584-1100

January 25-26

Snowmobile Rally, Deadwood, SD, 605-578-1876



January 8-March 13: South Dakota Legislative Session, Pierre, SD, 605-773-3251

Photo courtesy: travelouthdakota.com

January 25-26

Living History Fair, Lake Area Technical College, School children only on Friday, Open to public on Saturday, Watertown, SD, 605-881-1758

January 25-February 3

Annual Black Hills Stock Show & Rodeo, Rapid City, SD, 605-355-3861

January 26-27

Dakota Territory Gun Show, National Field Archery Building, Yankton, SD, 605-665-4537

February 2

Lake Hendricks Fishing Derby, Hendricks, MN, 507-828-2113

February 2-3

Dakota Territory Gun Show, Dakota Event Center, Aberdeen, SD, 701-336-7533

February 8-10

Black Hills Sports Show & Outdoor Expo, Rapid City, SD, 605-939-1812

February 9-10

Dakota Territory Gun Show, Trophy Show - The Big One, Convention Center, Sioux Falls, SD, 605-630-2199

February 16-17

Dakota Territory Gun Show, Ramkota River Centre, Pierre, SD, 605-280-2438

February 21-23

Sno Jam Comedy Festival, Sioux Falls, SD, siouxfallssnojamcomedyfest@gmail.com

February 22-23

State Wrestling Tournaments, Rushmore Plaza Civic Center, Rapid City, SD, 605-394-4111

March 1-2

Mardi Gras Weekend, Main Street, Deadwood, SD, 605-578-1876

March 9-10

2019 Gun Show, American Legion Hall, Saturday 9 a.m. to 5 p.m., Sunday 9 a.m. to 3 p.m. MST, Philip, SD, 605-441-8466 or 605-441-1216

March 9-12

Summit League Basketball Championship, Sioux Falls, SD, 605-367-7288

March 15-16

28 Below Fatbike Race, Lead, SD, 605-584-3435

March 29-30, April 5-6

Annual Schmeckfest, Freeman, SD, 605-925-4237

April 5-6

Forks, Corks and Kegs Food, Wine and Beer Festival, Deadwood, SD, 605-578-1876

To have your event listed on this page, send complete information, including date, event, place and contact to your local electric cooperative. Include your name, address and daytime telephone number. Information must be submitted at least eight weeks prior to your event. Please call ahead to confirm date, time and location of event.