

COOPERATIVE CONNECTIONS



From Cows to Canvas

Michelle Weber Captures Rural Life in Art

Pages 8-9

Sacred Hoops: Shooting for Success

Pages 12-13

Save the date for the 77th Annual Meeting of the Members.



Nolan Wipf
Board President

In previous years, Northern Electric held our Annual Meeting in September. At our January board meeting, the Board of Directors set Tuesday, June 11, 2024, as the date for the annual meeting of the members. The Northern Electric Annual Meeting is held annually to update the membership on happenings at the cooperative, provide a financial overview, and elect district representatives to the board of directors.

To improve the membership's experience, a few reasons have led the board of directors to change the Annual Meeting to June. First and foremost, by moving the Annual Meeting from September to June, audited financial information will be more timely to the Annual Meeting reporting period than in past years.

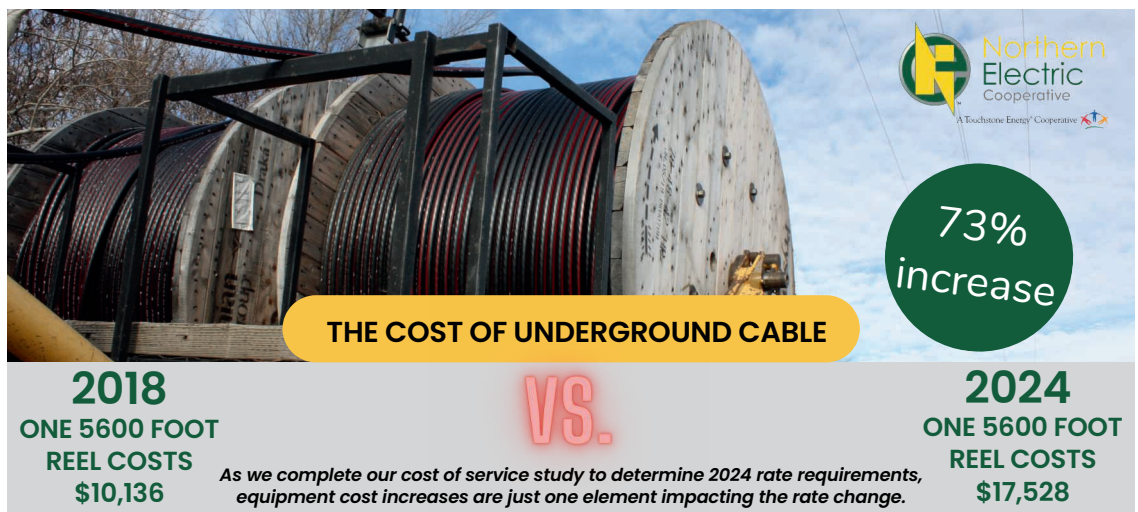
Another reason for the change in the Annual Meeting date is to help improve membership attendance. By moving the meeting to early summer rather than fall, we hope more members can attend when they are not busy with fall sports, school activities or harvest. We will

try a June Annual Meeting for 2024 and are open to adjusting the date if this year's date proves to not work for members.

The Northern Electric 2024 Annual Meeting will be hosted at the Odde Ice Center at the Brown County Fairgrounds in Aberdeen. We will again issue one meal voucher to each registered membership in lieu of a meal.

The Annual Meeting is an excellent opportunity to hear reports on the Cooperative's financial position and activities at YOUR Electric Cooperative. I encourage members to swing over to The Brown County Fairgrounds, pick up a meal voucher and gift, stay for the Annual Meeting, and meet directors, employees, and other members.

We welcome feedback on the Annual Meeting and any other issues. Please reach out to your district representative with concerns. Stay tuned for more details on the Annual Meeting, and we hope to see you on June 11, 2024!



COOPERATIVE CONNECTIONS

NORTHERN ELECTRIC

(USPS 396-040)

Board President: Nolan Wipf

Board of Directors

Todd Hettich - Vice President
Ron Kaaz - Secretary
Josh Larson - Treasurer
Fran Esser
B.J. Hansen
Kirk Schaunaman
Scott Sperry
Mike Traxinger

CEO/General Manager: Char Hager
info@northernelectric.coop

Chief Financial Officer: Lorisa Rudolph

Operations Manager: Jerry Weber

Manager of Member Services: Russel Ulmer

Manager of Information Technology: Derek Gorecki

Communications Director: Kelly Brandlee
kbrandlee@northernelectric.coop

Executive Secretary: Amy Golden

Northern Electric Cooperative Connections is the monthly publication for the members of Northern Electric Cooperative, PO Box 457, Bath, SD 57427. Families subscribe to Cooperative Connections as part of their electric cooperative membership. The purpose of Northern Electric Cooperative Connections is to provide reliable, helpful information to electric cooperative members on electric cooperative matters and better rural living.

Subscription information: Northern Electric Cooperative members devote 50 cents from their monthly electric payments for a subscription. Non-member subscriptions are available for \$12 annually. Periodicals postage paid at Bath, SD 57427.

Postmaster: Please send address changes to Northern Electric Cooperative Connections, PO Box 457, Bath, SD 57427; telephone (605) 225-0310; fax (605) 225-1684

This institution is an equal opportunity provider and employer.

www.northernelectric.coop



**Northern Electric
Cooperative**
A Touchstone Energy Cooperative

Northern Electric Cooperative's regular board meeting was held January 18, 2024, at the headquarters in Bath with all directors present or via teleconference. As the first order of business, the board approved the December 21, 2023, minutes, and December expenditures. The board then reviewed and accepted monthly reports by management.

East River Director Kirk Schaunaman reported on the East River Board meeting held January 4, 2024. General Manager Char Hager reported on the East River MAC Meeting held January 3, 2024. South Dakota Rural Electric Association Director Nolan Wipf reported on the SDREA Board Meeting Held on January 10, 2024, in Pierre. Directors Todd Hettich, Nolan Wipf, and General Manager Char Hager reported on the SDREA Annual Meeting and Legislative Dinner, which was held January 11-12, 2024, in Pierre.

MANAGER'S REPORT

General Manager Char Hager's report included the following items:

- Report on Rural Electric Development (REED) Board Meeting held on January 3, 2024.
- Report on East River MAC Meeting held on January 3, 2024
- Report on SDREA Annual Meeting, Legislative Dinner, and AEC meeting.

BOARD REPORT

The board considered and/or acted upon the following:

- Approved the date and time of the next regular board meeting for 8:30 A.M. on Friday, February 16, 2024.
- Approved Work Order Inventory #23-12 for \$1,244,360.42 to be submitted to Rural Utilities Service (RUS) for reimbursement from loan funds for electric plant construction already completed.
- Approved transfer of \$20,000 from the Rural Utilities Service Revenue Deferral Plan.
- Set the date and location of the Cooperative's 2024 Annual Meeting for Tuesday, June 11, 2024, at the Odde Ice Center in Aberdeen.

Talk to your director or co-op manager if you have questions on these matters.

FINANCIAL REPORT

	December-23	December-22
kWh Sales	29,462,271 kWh	33,798,780 kWh
Electric Revenues	\$2,641,548	\$1,931,955
Total Cost of Service	\$2,518,846	\$2,486,135
Operating Margins.....	\$122,702	-\$554,179
Year to Date Margins	\$2,351,957	\$3,079,156

RESIDENTIAL AVERAGE MONTHLY USAGE AND BILL

DECEMBER 2023.....	2,849 kWh.....	\$248.00.....	0.0870 per kWh
DECEMBER 2022.....	3,849 kWh.....	\$312.02.....	0.0811 per kWh

Wholesale power cost, taxes, interest, and depreciation account for **83.5%** of NEC's total cost of service.

Make Fall Safety a Top Priority

It may come as a surprise that the second leading cause of unintentional injury-related death is falls. In 2021, 44,686 people died in falls at home and at work, according to Injury Facts®. For working adults, depending on the industry, falls can be the leading cause of death.

Falls are 100% Preventable

March is Ladder Safety Month. Whether working from a ladder, roof or scaffolding, it's important to plan ahead, assess the risk and use the right equipment. First, determine if working from a height is absolutely necessary or if there is another way to do the task safely.

- Discuss the task with coworkers and determine what safety equipment is needed
- Make sure you are properly trained on how to use the equipment
- Scan the work area for potential hazards before starting the job
- Make sure you have level ground to set up the equipment
- If working outside, check the weather forecast; never work in inclement weather
- Use the correct tool for the job, and use it as intended
- Ensure stepladders have a locking device to hold the front and back open
- Always keep two hands and one foot, or two feet and one hand on the ladder
- Place the ladder on a solid surface and never lean it against an unstable surface
- A straight or extension ladder should be one foot away from the surface it rests on for every four feet of height and extend at least three feet over the top edge
- Securely fasten straight and extension ladders to an upper support
- Wear slip-resistant shoes and don't stand higher than the third rung from the top
- Don't lean or reach while on a ladder, and have someone support the bottom
- Never use old or damaged equipment; check thoroughly before use

Fall Hazards at Home

Are you a weekend warrior or do-it-yourselfer? If you take on home improvement or other weekend projects, it's important to prepare yourself for physical exertion, especially if you've been sedentary through the winter months, and take extra precautions to prevent falls.

Risky projects, like installing siding, gutters or roofs, are best left to professionals. Saving money isn't worth risking a debilitating or fatal fall.

At home or at work, many of the same rules apply. When taking on a project:

- Practice all of the ladder safety tips mentioned above
- Keep the work area clear of hazards and immediately clean up spills
- Read all instructions and safety precautions on your equipment
- Don't wear loose clothing that can get caught in equipment

We tend to think we're always safe on flat ground, but the thousands of injuries each year tell us otherwise.

- Falls are the #1 cause of death for older adults; fall-proof your home
- Keep floors and surfaces clear of clutter
- Keep file cabinets and desk drawers closed
- Keep electrical and phone cords out of traffic areas
- Install handrails on stairways
- Wear sensible footwear
- Never stand on chairs, tables or any surface with wheels
- Properly arrange furniture to create open pathways
- Maintain good lighting indoors and out

More than 6.9 million people were treated in emergency rooms for fall-related injuries in 2021. A fall can end in death or disability in a split second, but with a few simple precautions, you'll be sure stay safe at home and at work.

Source: National Safety Council



Trim Your Trees

Brace Tapio, Age 8

Brace Tapio cautions readers to trim their trees to prevent power line damage. Brace's parents are Nate and Elsa Tapio from Armour, S.D., members of Douglas Electric Cooperative.

Kids, send your drawing with an electrical safety tip to your local electric cooperative (address found on Page 3). If your poster is published, you'll receive a prize. All entries must include your name, age, mailing address and the names of your parents. Colored drawings are encouraged.

SEAFOOD SPECIALS

CAJUN SHRIMP

Ingredients:

1 lb. large shrimp, peeled and deveined
2-3 tps. cajun seasoning
2 tbsps. butter

Method

Coat shrimp with seasoning. Melt butter in large skillet on medium heat. Add shrimp; cook and stir three minutes or just until shrimp turn pink. Serve over cooked rice, if desired.

McCormick.com

CRAB SALAD SPREAD

Ingredients:

8-12 oz. imitation crab meat, flake style, tear into small pieces
1 tbsp. lemon juice
1 cup (approx.) shredded Cheddar cheese
1 small can black olives, sliced
Mayo (must be Mayo), to get correct texture, less is better than too much
1/4 to 1/2 pepper, cracked

Method

Mix by hand. Serve with Club or Ritz crackers.

Linda Hubbard
Rapid City, S.D.

CREAMY SHRIMP LINGUINE

Ingredients:

8 oz. linguine
1 tbsp. butter
1 lb. large shrimp, peeled and deveined
1 cup heavy cream
1 package garlic butter shrimp scampi
2 tbsps. white wine

Method

Cook pasta as directed on package. Drain well.

Melt butter in large skillet on medium-high heat. Add shrimp; cook and stir 2 minutes or just until shrimp turn pink. Add cooked pasta, Seasoning Mix, cream and wine. Reduce heat to medium; cook 1 to 2 minutes or until heated through, stirring occasionally. Serve with grated Parmesan cheese.

McCormick.com

Please send your favorite recipes to your local electric cooperative (address found on Page 3). Each recipe printed will be entered into a drawing for a prize in December 2024. All entries must include your name, mailing address, phone number and cooperative name.

Petitions are now available for 2024 board of directors seats

Nominating Petitions Due By April 26.

During Northern Electric Cooperative's 2024 Annual Meeting (Tuesday, June 11, 2024) members will elect Directors for Districts 1, 3, and 8.

Incumbent directors Mike Traxinger, Claremont (Dist. 1), Ron Kaaz, Aberdeen (Dist. 3), and Fran Esser, Redfield (Dist. 8) are all eligible to run again and are up for re-election.

Northern Electric Cooperative uses a petition process to nominate directors. A petition must be circulated for each candidate. Candidates must be cooperative members and reside in the district they wish to represent. A designated representative of an entity may seek election. The representative must reside within the district in which they would represent. Each petition must be signed by at least ten (10) cooperative members residing in that candidate's specific district.

Only one party of a joint membership may sign a petition; but not both.

Petitions are available at the Northern Electric offices in Bath. Director petitions must be submitted not more than one hundred-twenty (120) nor less than forty-five (45) days before the Annual Meeting to have names placed on the official ballot and the Notice of the Meeting.

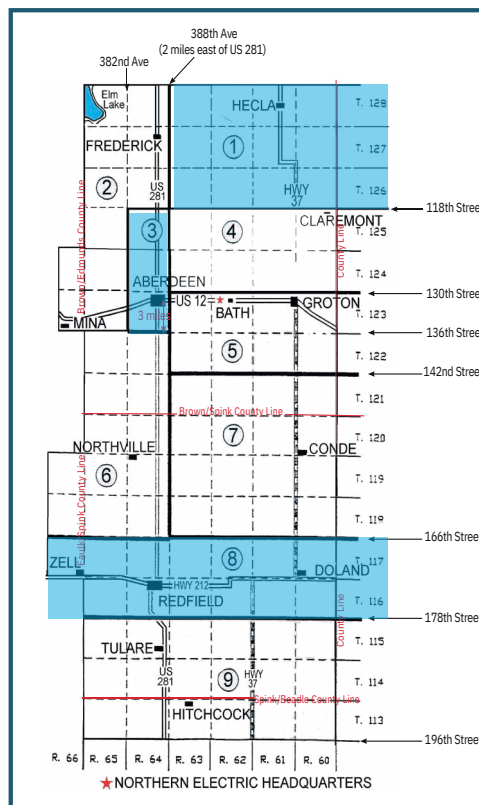
Petitions must be filed at a Northern Electric Cooperative

office by close of business (4:30 p.m.) Friday, April 26, 2024. No petitions filed after April 26, 2024 shall be considered valid.

Nominations are not permitted from the floor during the meeting.

Members may only sign ONE nominating petition for a director candidate from their district of record.

For a complete copy of the Northern Electric Cooperative Bylaws contact Northern Electric at 605-225-0310 or stop by the Bath office. The bylaws are also available online at www.northernelectric.coop/cooperative-



NORTHERN ELECTRIC SEEKS TWO TEMPORARY APPRENTICE LINEWORKERS

Northern Electric Cooperative is accepting applications for two temporary apprentice lineworkers.

Temporary lineworkers will assist line crews with construction and maintenance of distribution lines. This is a seasonal position and applicants must have a commercial driver's license (CDL).

Applications are available online at <https://www.northernelectric.coop/employment> or by calling 1-800-529-0310.

Please submit an application and resume by mail, or e-mail, to:

Jerry Weber, Operations Manager,
Northern Electric Cooperative
PO Box 457 Bath, SD 57427.
E-mail: jweber@northernelectric.coop.

Applications will be accepted until positions are filled.

This institution is an equal opportunity provider and employer.

DIRECTOR NOMINATION AND ELECTION PROCESS

DIRECTOR QUALIFICATIONS

Northern Electric Cooperative Bylaws
Article IV Section 4

No person shall be eligible to become or remain a director who:

- a. Is an employee of the Cooperative.
- b. Is not a member and bona fide resident of the service area served by the Cooperative located within the particular District provided that if the member is an entity other than a natural person then such person must be the Designated Representative of the entity, and such Designated Representative must reside within the district they represent.
- c. Is in any way employed by or financially interested in a competing enterprise or business selling electric energy or supplies to the Cooperative or a business primarily engaged in selling electrical or plumbing appliances, fixtures or supplies to the members of the Cooperative.
- d. Has been previously removed as a director in accordance with the procedures provided for removal in these Bylaws.
- e. Has failed to attend at least 2/3 of all regular board meetings during any consecutive twelve (12) month period.
- f. Has been employed by the Cooperative in the past five (5) years.
- g. Has pled guilty or has been convicted of: a felony, any crime involving dishonesty, or any crime involving moral turpitude.
- h. Does not have the capacity to enter into legally binding contracts.

2024 Annual Meeting Scheduled For Tuesday, June 11

NORTHERN ELECTRIC COOPERATIVE BYLAWS ARTICLE IV SECTION 6

Section 6. Nomination of Directors. Any ten (10) or more members including a Designated Representative of an entity, in such District may file or sign a nominating petition, in the form provided by the Cooperative, with the Secretary placing in nomination any qualified member from such District. Each signatory shall place the date of signing and the member's address on said petition. No member may sign a petition to nominate more than one candidate, and to do so shall invalidate the member's signature on the petition signed on the latest date.

This procedure shall be followed in each director district in which the director term shall expire. Upon receipt of such petition and having found the same to be in order, the Secretary shall post such nomination in the principal office of the Cooperative. Candidates so nominated shall be identified in the Notice of the Meeting and shall also be named on the official ballot. Such Petition for Nomination shall be filed with the Cooperative not more than one hundred-twenty (120) nor less than forty-five (45) days before the membership meeting. The order in which the nominees

shall appear on the printed ballot shall be determined by lot under the supervision of the Secretary. If any nominee should refuse to become a candidate or is not qualified, in accordance with the requirements of these Bylaws, the Secretary of the Cooperative is authorized and directed to remove the name or names from the list of posted nominees and/or from the ballot.

The Secretary shall be responsible for mailing with the notice of the annual meeting, or separately, but at least ten (10) days before the date of the meeting, a statement of the number of directors to be elected and the names and addresses of the candidates nominated. No nominations shall be permitted from the floor. Each member of the Cooperative present at the meeting shall be entitled to vote for one candidate from their specific district from which a director is to be elected. Upon establishment of a quorum the annual member meeting shall be deemed convened. Voting may occur in accordance with the procedure established by the Board. The candidate from each district receiving the highest number of votes at the meeting shall be considered elected as a director.



Rural Artist Michelle Weber has illustrated 11 children books in addition to showcasing her art nationwide and internationally.

Michelle Weber Captures Rural Life in Art

Frank Turner

frank.turner@sdrea.coop

During her upbringing in Windom, Minn., Michelle Weber discovered her passion for art at a young age. She was the kid who was always doodling, often paying more attention to her drawings than to the class. Holding on to her passion, Weber took her first art class in high school with her art

teacher, Mark Nass. Although the class had a rocky start, Nass recognized her potential and helped fuel a passion that would ultimately lead Weber to becoming a prominent rural artist.

"I was a junior in high school when I enrolled in my first real art class, and to be honest, I kind of hated it," said Weber. "That first week, I was mortified that I wasn't any good."

Initially contemplating dropping the class, Weber sought a signature from her art teacher to change her art class to a study hall instead. Despite her request, Nass refused to let her drop the class and encouraged her to try give the class another chance.

"After a few weeks, everything just clicked," said Weber. "I fell in love with painting and began living in the school's art room."

In less than a year, Weber made substantial progress in her artistic abilities. Enough so, that her teacher encouraged her to apply for the Congressional Art Competition. She applied,

and her painting not only won in her district but also earned a spot in the U.S. Capitol building in Washington D.C., where it was showcased for an entire year.

Weber's success in the Congressional Art Competition foreshadowed what was to come. Drawing inspiration from her upbringing on a farm and involvement in 4-H, Weber began primarily painting livestock. In 2011, Weber's friend from Mitchell, S.D., Amanda Radke, approached her with a request to illustrate a children's book featuring livestock and rural agriculture, a perfect fit for Weber's artwork. This opportunity led to the creation of "A World With Cows," marking Weber's first foray into a full-time career as an artist.

"The book was a huge stepping stone for both of us," said Weber.

The children's book marked not only the beginning of a career but also established Weber's niche – capturing the focal point of rural life on canvas: livestock, horses, buffalo, and more. Weber has since illustrated 10 additional children's books and successfully sold her artwork both nationwide and internationally.

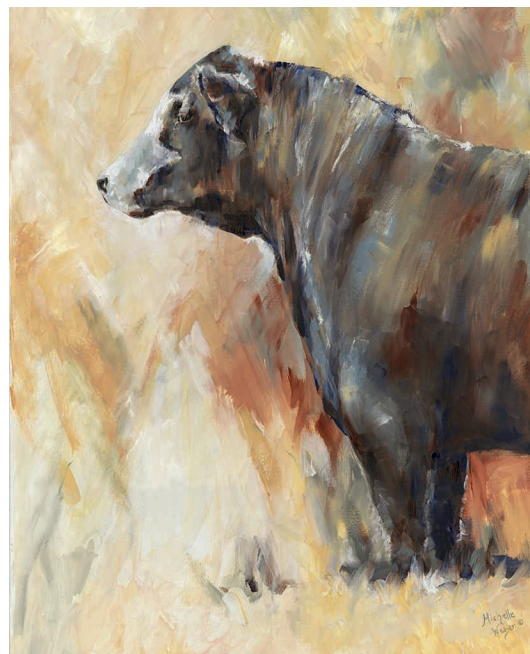
Traditionally, her oil paintings have been rooted in a realism, capturing every detail of the depicted animals. More recently, Weber has expanded her art to include a more whimsical and abstract representation of the rural lifestyle.

"My niche market is the producer, so it's important that my art reflects an authentic rural lifestyle," said Weber. "I want these paintings to have a touch of who I am, but also have the integrity of this lifestyle retained on canvas too."

Today, Weber resides just outside Lake Benton, Minn., a town just outside the South Dakota border. From her small town, Michelle Weber also maintains a website, michelleweberstudio.com, where she showcases a wide range of products

featuring her artwork, including prints, notecards, children's books, and even cake pans. In addition to her website, Weber recently opened a studio named, "The Studio by Michelle Weber" in the center Lake Benton.

"The Studio is a space located right in the heart of Lake Benton," said Weber. "Some people look at Lake Benton with a population of less than 700 or less and ask, 'Why would you open your studio there?' But I stand behind supporting these small. They are the heartbeat of this country, so it only seemed fitting to bring it home."



A Weber painting, titled "Side Eye."



Weber is widely known for her oil paintings that capture the essence of an authentic rural lifestyle on canvas.



JOIN US ON THE VIP TOUR TO

BASIN ELECTRIC

Want to learn how electricity gets from the power plant to your home?

Join us on a Northern Electric and Lake Region joint members-only tour of the Basin Electric Power Cooperative facilities in North Dakota.

The tour is FREE for members.

Visit the website for a complete list of tour rules and to apply.

Applications are due May 24

APPLY ONLINE AT:
NORTHERNELECTRIC.COOP/VIPTOUR



APPLY FOR 2024 SCHOLARSHIPS

Students Can Apply Now For \$1,000 and \$500 Co-op Scholarships

Students of Northern Electric Cooperative members who are currently enrolled in a post-secondary school - or plan to enroll in the fall of 2024 can now apply for two co-op-sponsored scholarships.

Bismarck-based Basin Electric Power Cooperative, which generates electricity for Northern Electric Cooperative, is awarding a \$1,000 scholarship to a student within the Northern Electric service territory. Northern Electric is also awarding a \$500 scholarship to a student of a co-op member. Students can apply for both scholarships by filling out one Basin Electric 2024 scholarship application which can be found on the Northern Electric website at northernelectric.coop/scholarships. Applications can also be picked up at a Northern Electric office.

In 2023, Ethan Boekelheide of Northville was awarded the \$1,000 Basin Electric scholarship and

Abbilyn Kaan of Aberdeen was the recipient of the \$500 Northern Electric scholarship.

The scholarship application includes information about the student's academic record, work experience, an applicant appraisal from an advisor or supervisor, and a one-page essay on the topic: *'What challenges face rural electric cooperatives in the coming years and how do you think challenges should be addressed?'*

The entire application must be completed and turned into the Northern Electric Cooperative office in Bath by the **February 16, 2024** deadline.

A committee of cooperative employees will evaluate the applications and award both the \$1,000 and \$500 scholarships from the pool of applicants. Scholarships will be directly paid to the institution where the recipient is enrolled in the fall of 2024.

How to Apply

• SCHOLARSHIP ELIGIBILITY

Applicants must be U.S. citizens under the age of 25, and natural or adopted children of Northern Electric Cooperative consumers/ members. Any applicant must be a student who is enrolled, or planning to enroll, in a full-time graduate or undergraduate course of study at an accredited two-year or four-year college, university, or vocational/technical school.

• THE SELECTION PROCESS

All applications are critically evaluated by a committee of cooperative employees using a combination of several criteria including: a written essay, participation in school and community activities, grade-point average, SAT/ACT scores, a statement by the student explaining his/her educational and career goals, financial need, and a written recommendation from a third party. The winning \$1,000 entry will be sent to Basin Electric for scholarship distribution. The committee will also select the winning entry for the \$500 Northern Electric scholarship.

• APPLICATION

Applications are available from local high school guidance counselors, on the Northern Electric Cooperative website at northernelectric.coop/scholarships or directly from the Northern Electric office in Bath.

COMPLETED APPLICATIONS MUST BE RETURNED BY FEBRUARY 16, 2024 TO:

Northern Electric Cooperative
Attention: Scholarship
PO Box 457
Bath, SD 57427

For more information contact Kelly Brandlee at: **605-225-0310**



Sacred Hoops Coach Tuffy Morrison is just one of many volunteer coaches who make Sacred Hoops Basketball a reality for rural athletes.

SHOOTING FOR SUCCESS

Sacred Hoops Basketball Scores Big with Rural Youth

Frank Turner

frank.turner@sdrea.coop

Sacred Hoops Basketball, a nonprofit organization unique to South Dakota, has been changing the game for youth basketball across the state for more than six years. Using basketball as a tool for youth development, the program organizes teams, trains coaches, and hosts tournaments and workshops for young individuals in all communities – both big and small.

Since the program's conception, the emphasis has centered on rural engagement. Allan Bertram, the owner and operator of Sacred Hoops, co-founded the program alongside Jordan Long and a few other movers and shakers as a way to bring quality basketball instruction to students who would otherwise need to travel hundreds of miles to participate. Their goal was to make basketball accessible to all athletes across the state, not only improving their basketball skills but

also their life skills.

"We wanted to bridge the gap for kids in rural areas, particularly our athletes in low socio-economic areas who may not have been able to play basketball otherwise," said Bertram. "We want to ensure that every kid who wants to play can."

Beyond hosting tournaments and teams, Bertram and the organization's other volunteers have found other ways to make changes on and off the basketball court. In addition to hosting more than 120 high school instruction programs across the state, Sacred Hoops Basketball annually distributes more than \$70,000 in scholarships that aid athletes from low-income families to play ball. The organization was also the driving force behind a recent initiative that placed 2,000 new pairs of shoes in the hands of children from select, rural



Sacred Hoops Director and Coach Ted Standing Soldier draws up a play for the the Sacred Hoops West River Youth Team.

elementary schools in South Dakota.

“We’ve seen so many kids grow and fulfill their passion,” said Bertram. “In today’s world, our youth sometimes don’t understand what their purpose or passion is, and that’s why so many of our youth are struggling. It doesn’t matter what a kid is passionate about – it could be music, sports, gaming, or whatever – but it’s our job to help feed that passion because that is what gives those kids a purpose.”

Today, the program has expanded to encompass more than 50 dedicated volunteers and 600 athletes across 60 teams in their summer season, with athletes spanning from third grade to high school. These numbers, said Bertram, have added up to a real impact for athletes across the state. Within Sacred Hoops Basketball, more than 75 athletes have gone on to play college-level basketball.

“It gives us a great sense of pride because those kids are not only getting a post-secondary degree but also get to continue their passion by playing at the next level,” said Bertram. “Many of these kids come from rural areas or

locations.”

Sacred Hoops Basketball Director and Coach Ted Standing Soldier also emphasized the impact that the nonprofit has had on West River athletes. Standing Soldier regularly works with athletes from several rural

West River communities, including Pine Ridge, Belle Fourche, Kadoka, and more.

“We have athletes from all over come to play on one team, and it’s changing the game for these kids. We have seen several of our athletes start making junior varsity and varsity teams as middle schoolers,” said Standing Soldier. “These are kids we want to help reach their full potential, both on and off the court.”

Reflecting on his upbringing, Standing Soldier said that basketball played a significant role in his early life, ultimately leading to college scholarships that allowed him to play basketball for Platte Community College in Nebraska and later the University of Mary in North Dakota. Those opportunities, he said, are ones that he wants to share with other youth in South Dakota.

“Basketball has been a part of my entire life,” he said. “I developed a love for the game. God has used it to impact my entire life, and now I’m using it to impact others.”



The Sacred Hoops Basketball AAU West Coast National Championship Team.

TELL US WHO POWERS YOU!

We know our co-op community is filled with people making a difference. Let's celebrate them! Nominate a member or employee of your local Touchstone Energy® Cooperative who goes above and beyond.

They could win up to \$3,000!

Nominate your local hero at
[WHOPOWERSYOUCONTEST.COM](https://www.whopowersyoucontest.com)





'WHO POWERS YOU' CELEBRATES LOCAL HEROES

Nominate friends and neighbors making a difference in your local communities

Nominations are now open for *Who Powers You*, a contest being hosted by Northern Electric Cooperative and the region's Touchstone Energy® Cooperatives. The third annual *Who Powers You* contest seeks to highlight local figures who are making a difference in their communities.

"In rural South Dakota, we live in tight-knit communities where individuals volunteer to make their school, church, or other community minded groups great," said Northern Electric Cooperative Communications Director Kelly Brandlee. "Those people don't do it for the recognition, but they deserve to be recognized, and we'd like to help make that happen."

Member-owners, employees, and

citizens who live or work within Northern Electric Cooperative's service territory are eligible to be nominated. Nominations are currently being accepted online through April 7, 2024, at Whopowersyoucontest.com. Weekly finalists will be announced and featured on Keloland Living starting March 7, 2024, and the three contest winners will be announced on Keloland Living at the end of May.

The *Who Powers You* contest grand prize winner will receive a \$3,000 prize. The second-place winner will receive \$1,500 and the contest's third place winner will receive \$500.

Bob and Nancy Montross of DeSmet, SD, won the first

NOMINATE SOMEONE 'WHO POWERS YOU'

Visit Whopowersyoucontest.com to nominate an individual

- Anyone who is making a difference in the communities served by Northern Electric Cooperative can be nominated.

Weekly finalists will be announced on Keloland Living

- Finalists will be featured on Keloland Living starting March 7.

Three winners will be announced in May

- The three winners of the contest will be announced on Keloland Living and receive cash prizes.
 - 1st Place - \$3,000
 - 2nd Place - \$1,500
 - 3rd Place - \$500

place \$3,000 prize in 2023. Bob and Nancy keep active in their community by helping raise money for the DeSmet Events and Wellness Center, helping the Arts Council bring concerts to their area, and have helped fundraise for the athletic complex. The Montross' are also involved with the cemetery board, Highway 14 Trail and Observation Tower project among other events.

"The *Who Powers You* contest highlights the commitment of our co-op to the communities and member-owners that we serve. We know that our co-op community is filled with people making a difference," Brandlee said.

To learn more about the *Who Powers You* contest and to nominate someone in your community, visit Whopowersyoucontest.com.



MARCH 1-3, 2024
National Pheasant
Fest & Quail Classic
 1201 N West Ave.
 Sioux Falls, SD

FEB. 15 - MARCH 15
Chamberlain-Oacoma
Burger Battle
[Facebook.com/chamberlainoacoma](https://www.facebook.com/chamberlainoacoma)
 Chamberlain-Oacoma, SD

FEB. 19
Wessington Springs Farm,
Home & Health Show
 10 a.m.- 3 p.m.
 W. S. Elementary Gymnasiums
 Wessington Springs, SD

FEB. 24
Plankinton Fire &
Ambulance Fundraiser
 5 p.m. - 7 p.m.
 Plankinton Ag Building
 Plankinton, SD

MARCH 3
Sioux Falls American Legion
Pancake Breakfast
 8:30 a.m. - 12 p.m.
 South Dakota Military
 Heritage Alliance Building
 Sioux Falls, SD

MARCH 9
French Toast/Pancake Feed
& Health Fair
 8:30 a.m.
 Tea Community Building
 Tea, SD

MARCH 9
Epiphany Sausage Sale
 605-425-2600
 Epiphany Catholic Church
 Epiphany, SD

MARCH 15
East Dakota Chapter NWFT
31st Annual Banquet
 Ramkota Exhibit Hall
 Sioux Falls, SD

MARCH 23
Tyndall VFW Vegas Night
 7:30 p.m.
 Tyndall Community Center
 Tyndall, SD

MARCH 23
Brown County Fair
Foundation Hall of Fame
Banquet and Auction
 6 p.m.
 Yelduz Shrine
 Aberdeen, SD

MARCH 29
NDFC Tracy Byrd Concert
 6 p.m.
 Holum Expo Building on the
 Brown County Fairgrounds
 Aberdeen, SD

APRIL 2
Clay-Union Electric
Ribbon Cutting & Open
House
 3 p.m. - 6:15 p.m.
 31321 SD Hwy. 19
 Vermillion, SD

APRIL 4
McCrossan Wildest Banquet
Auction in the Midwest
 5:30 p.m.
 \$100 per Ticket
 Sioux Falls Arena
 Sioux Falls, SD

APRIL 5-7
71st Annual Hayes Play:
Under a Cowboy Moon
 7 p.m.
 Hayes Community Hall
 Hayes, SD

APRIL 19
American Legion Post 15
Dance
 6 p.m.- 10:30 p.m.
 El Riad Shrine
 Sioux Falls, SD

APRIL 27
Henry's Run 5k Run/Walk
 9 a.m.
 Register online
sandfordhealthfoundation.org
 Falls Park
 Sioux Falls, SD

MAY 4-5
Flea Market
 9 a.m. - 6 p.m.
 605-770-2411
 Rustic Designs & More
 Ethan, SD

MAY 4-12
Spring Show
 9 a.m. - 6 p.m.
 605-770-2411
 Rustic Designs & More
 Ethan, SD

To have your event listed on this page, send complete information, including date, event, place and contact to your local electric cooperative. Include your name, address and daytime telephone number. Information must be submitted at least eight weeks prior to your event. Please call ahead to confirm date, time and location of event.

Note: Please make sure to call ahead to verify the event is still being held.